

Council Accomplishments

- Membership has grown from 64,386 to 77,982 youth (+21.1%) in five years.
- 2,025 youth achieved Eagle Scout last year.
- More than 16,000 rank advancements were achieved and more than 52,000 merit badges were earned last year.
- More than 29,000 youth attended council summer camps last year.
- The Great Salt Lake Council was recognized in the Chief Scout Winner Circle.
- Increased district committees, commissioner staffs and improved ratio of commissioners to units.
- Professional staff has been restructured and support staff has been strengthened to provide direct support to unit volunteers.
- Customer satisfaction evaluations have improved in recent years, a major priority.
- A multi-million dollar "Investment in Character Campaign" to meet current and future capital needs has been organized and implemented under top volunteer leadership. The first major project is underway at Bear Lake.
- The council has reached out to people of all faiths in the community, organizing a strong relationships committee and chartering Scouting at numerous new sites.

The Great Salt Lake Council is dedicated to delivering a quality program to our youth and their families and serves four counties in Utah: Salt Lake, Summit, Tooele, and south Davis.

Our way to say Thank You



The 2010 Brave patch is one of 13 council shoulder patches commemorating the Scout Law. Receive this year's part of the collection when you donate \$100 or more. Previous years' patches are still available.

The Scout Law		2000	
Trustworthy		2001	 Obedient
Loyal		2002	 Cheerful
Helpful		2003	 Thrifty
Friendly		2004	 Brave
Courteous		2005	 Clean
Kind		2006	 Reverent

FOS

Friends of Scouting

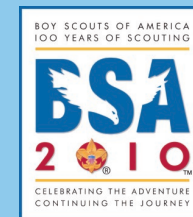
2010



I promise
to do
my best

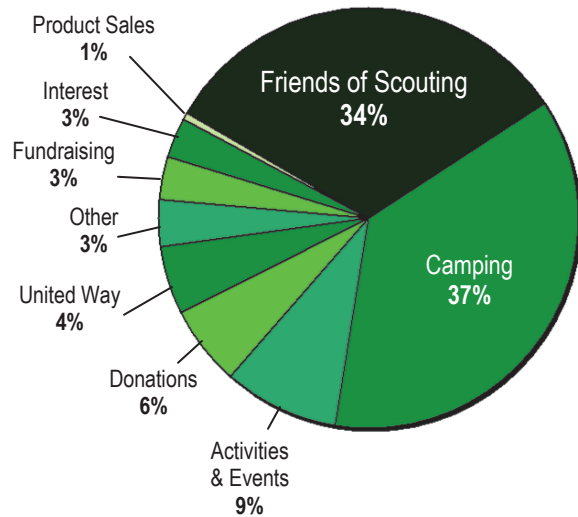
Great Salt Lake Council
Boy Scouts of America

www.saltlakescouts.org



Great Salt Lake Council — Boy Scouts of America

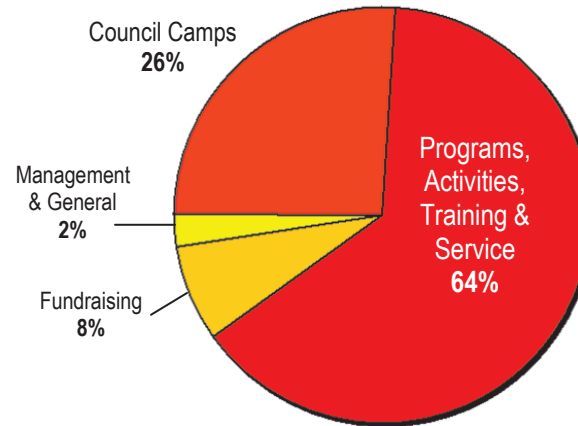
How we are funded:



This graph shows council funds for unrestricted Fund 1 sources. For information on the council's capital campaign (Fund 2) or endowment investments (Fund 3), please contact the council office.

The council is a 501(c)3 organization and is audited annually by a qualified outside firm.

How we invest in youth:



Programs, Activities, Training & Service

- Advancement and records programs
- Maintenance and improvements for 14 summer camps at 7 properties
- Improved Web site for training and resources: www.saltlakescouts.org
- Youth programs and activities: Scout jamborees, district camporees, and Klondike Derbies
- Training for adult leaders: Fast Start, Basic Training, Youth Protection, and Wood Badge
- Training for youth leaders: NYLT, Silver Moccasin, On Belay, and Kodiak
- Monthly roundtables and program ideas to assist adult leaders in delivering quality programs to youth members
- Community service: Scouting for Food and drug awareness
- Liability insurance to protect leaders and chartered organizations
- Service Center and Scout Shops
- Professional Scouters to support local units and districts

A Scout is trustworthy, loyal, helpful, friendly, courteous, kind, obedient, cheerful, thrifty, brave, clean, and reverent.



Giving Levels

\$5,000 — Benefactor
 \$2,500 — Sponsor
 \$1,000 — Guardian
 \$500 — Patron
 \$250 — Leadership
 \$100 — Century
 \$50 — Friend of Scouting



Great Salt Lake Council, Boy Scouts of America
 525 Foothill Blvd — Salt Lake City, Utah 84113-1102
 (801) 582-3663 — www.saltlakescouts.org

I wish to contribute:

- ☐ \$5,000 Benefactor
☐ \$2,500 Sponsor
☐ \$1,000 Guardian
☐ \$500 Patron
☐ \$250 Leadership
☐ \$100 Century
☐ \$50 Friend of Scouting
☐ Other \$ _____

Payment Method:

- ☐ Full Donation Enclosed (Checks payable to BSA)
☐ Bill Me: ☐ Once ☐ Monthly (Gifts over \$100)
☐ Visa, MasterCard, Discover, or American Express # _____
 Exp. Date ____ / ____

FOS 2010 Friends of Scouting

Yes, I want to help provide Scouting programs to over 77,000 youth and their families in my community.

Name _____
 Address _____
 City _____ State _____ Zip _____
 Phone _____
 E-mail _____
 Donor Signature _____